



B4224 Fownhope and Fiddlers' Green – Update 16

Welcome to your newsletter. If you have any comments, questions or queries please contact Rachel.Rice@balfourbeatty.com

Lechmere's Ley

The build-up and grading of the bank is nearing completion and almost up to road level. Golden Valley Construction have applied a geocell cellular membrane to the bank which will help to stabilise the soil and control erosion. Topsoil will be applied before work starts on re-instating the road at the end of June.



30mph extension agreed for section of diversion route!

The proposed 30mph extension from Mordiford to the Roger Moss turn will from this week be extended temporarily whilst the permanent legal TRO notice is being finalised.

Heavy site traffic

Our drivers have been reminded about speed limits, and a 'slow' sign has been put out at the end of the village for lorries leaving the site, and also at Nash Pitch to serve as a prompt to vehicles entering the village.

Pedestrians are reminded to please take care and be aware of temporary construction traffic at all times.

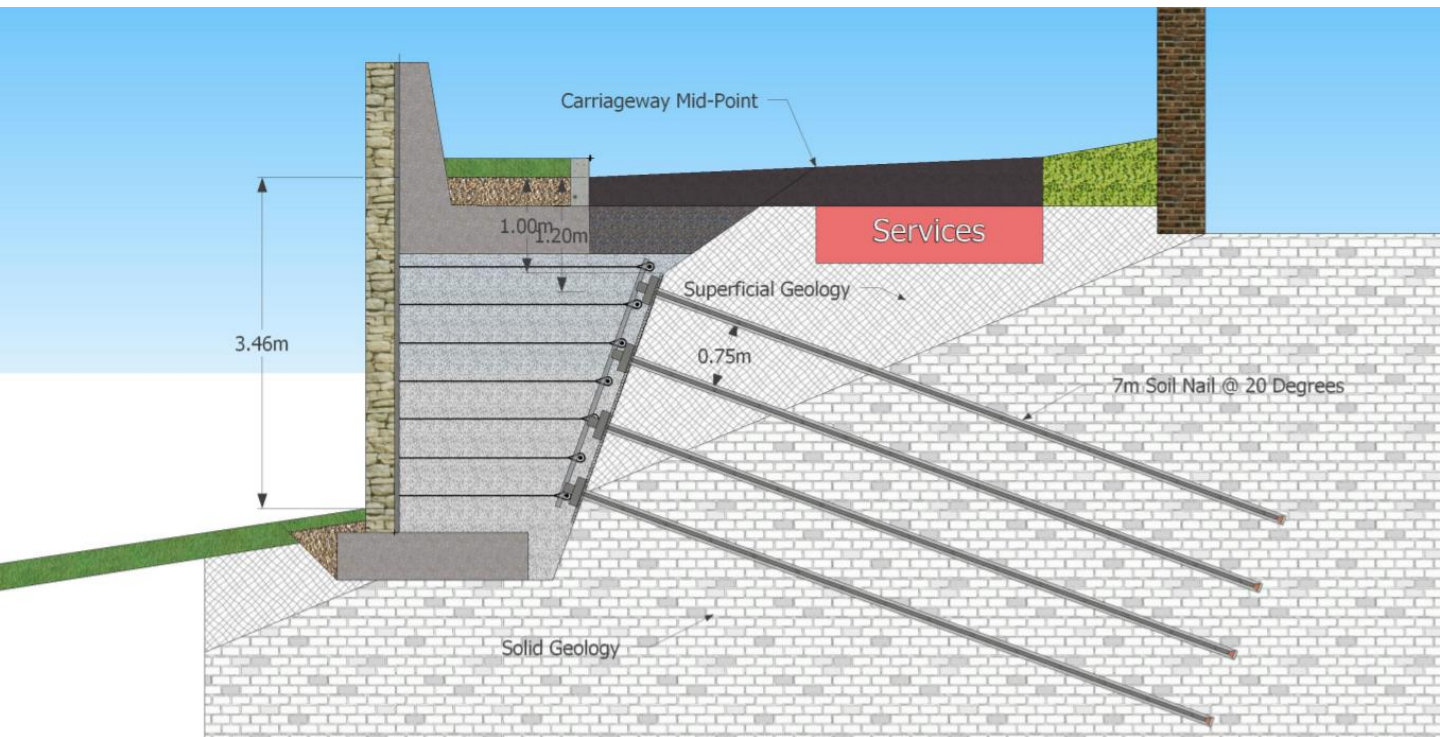




Stone Cottage

We are nearing completion of the detailed design. There are a number of interdependent elements which will integrate the complexity of vehicle restraint systems and utility requirements including: *Soil Nail Design, Reinforced Earth Design, Parapet/Vehicle Containment System including foundations, Geometric design of all elements (ensuring they all fit in the space available), Wall facing, Carriageway design, Carriageway drainage, Wall Drainage, and Construction sequencing.* We will share more detail about some of these elements in the coming weeks.

Meanwhile, the graphic below is an indicative illustration of the potential final design solution which incorporates soil nailing and reinforced earth.



Temporary Walkway past Lechmere Ley

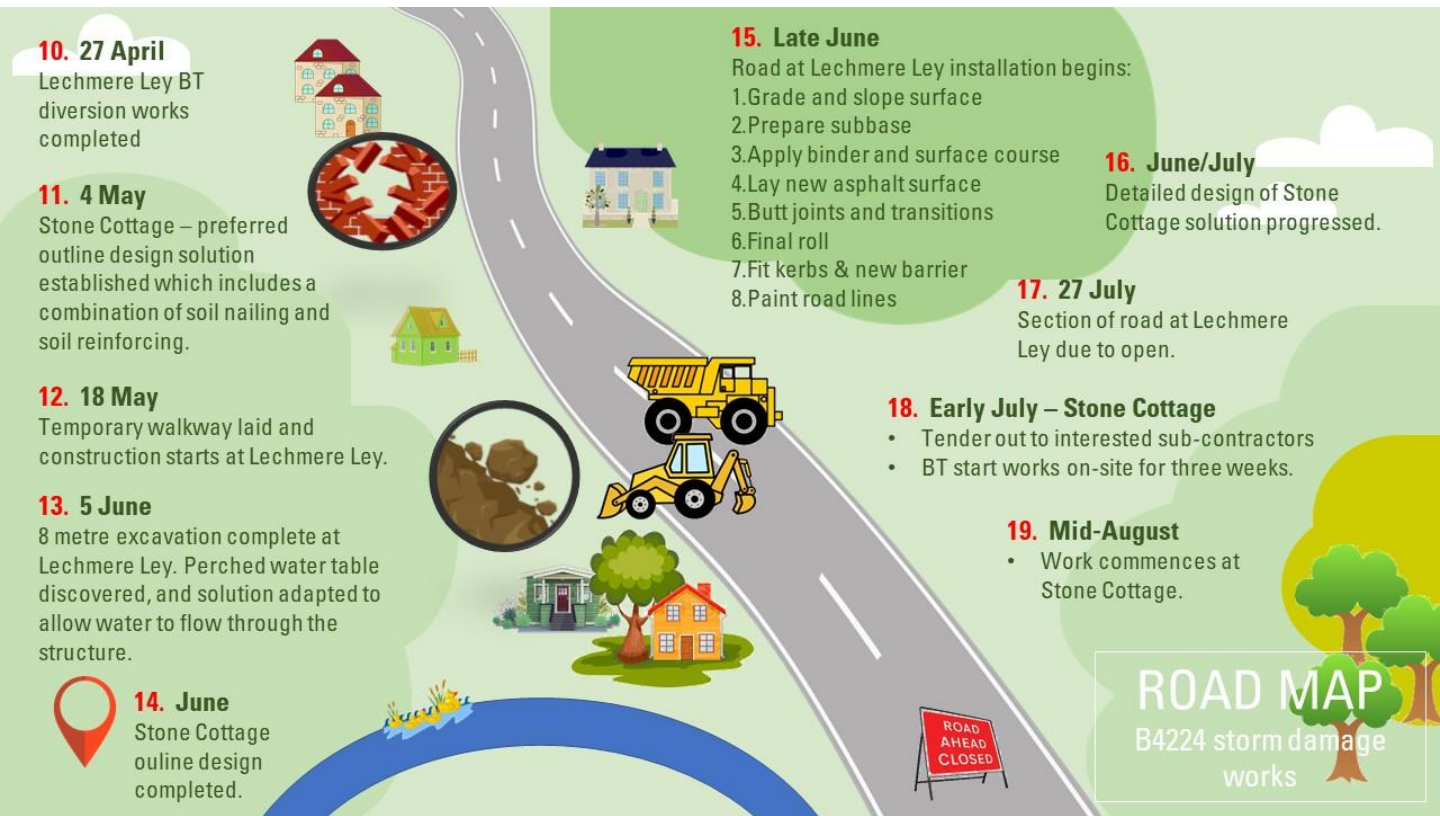
We are still receiving reports of cycles, and even a motorcycle being used on the Lechmere Ley walkway and would remind everyone that the temporary path is for pedestrian use only and is not suitable for cycles or motorised vehicles. **We kindly ask that if cyclists wish to use they dismount and wheel their bikes along the length of the path.**





Road map

We are on schedule to open the road at Lechmere’s Ley at the end of July and start work on the Stone Cottage engineering solution in August. The graphic below shows the work we have completed from April and takes us to the beginning of the Stone Cottage project.



Thank you for taking the time to share your thoughts with us. We appreciate all the compliments and feedback we receive from you, and make sure we pass them on to the workers on site.



Rachel Rice, Balfour Beatty Living Places

Rachel is your day-to-day contact, and responsible for community engagement.

Email: Rachel.Rice@balfourbeatty.com



@FownhopePC
@HfdsStreets



@FownhopeVillage